

everest

Dry Wall Partition

Designed to last long, and stay strong.

Everest Dry Wall systems are ideal for external and internal applications. In comparison to conventional walls, these are:

- Lightweight and saving on structural cost.
- 4 x faster to construct for saving time and cost of labour.
- Customisable as per required fire rating, sound and thermal insulation.
- A sustainable system offering dry construction.



Fire
Resistant



Moisture
Resistant



Termite
Proof



High Impact
Resistant



Eco Friendly



Better Sound
Insulation



Better Thermal
Insulation



High Unplanned
Loading

Area of Application

Dry Area Internal Wall

Product	Thickness (mm)
MP board	8 9 12

Other Everest products for aesthetical features

Product	Size
Artewood*	3000x150x8 mm
Artestone*	2440x1220x8 mm
Cement Wood Plank*	3000x150x8 mm

Fire rating can be providing basis the required application

External Wall

Product	Thickness (mm)
Everest HD Board	8 9 12

Other Everest products for aesthetical features

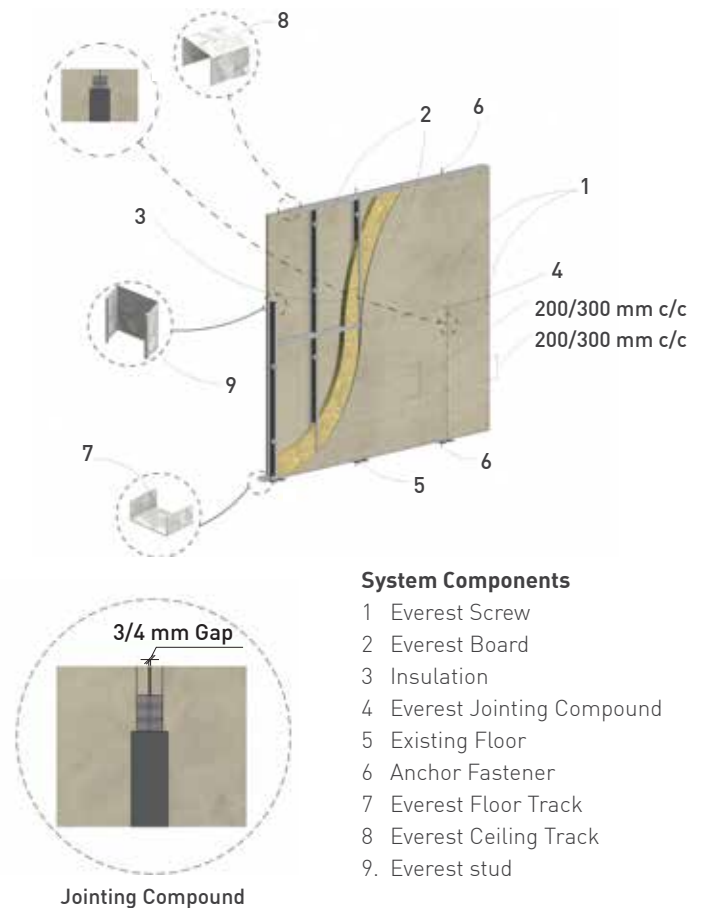
Product	Size
Artewood*	3000x150x8 mm
Artestone*	2440x1220x8 mm
Cement Wood Plank*	3000x150x8 mm

Wet Area Internal Wall

Product	Thickness (mm)
Everest HD Board	8 9 12

*With fibre cement board substrate wherever required.

*Superior backer (substrate) board for wall tiles and marble in wet areas.



System Components

- 1 Everest Screw
- 2 Everest Board
- 3 Insulation
- 4 Everest Jointing Compound
- 5 Existing Floor
- 6 Anchor Fastener
- 7 Everest Floor Track
- 8 Everest Ceiling Track
9. Everest stud



Everest products are CE System-1 certified and compliant with EN 12467 and ASTM standards.

*Not actual project images. Images shown are for representative purpose only.

EVEREST INDUSTRIES LIMITED

Email: ib@everestind.com
www.everestind.com

Scan the QR code for more information.

