



**everest**

HEAVY DUTY BOARDS







One board for  
all your solutions.

## REIMAGINE.

Have you ever wished to create ceilings that swept onlookers off their feet? Or walls that whispered luxury and corners that brought you to the centre of applause? Doors that opened up to newer possibilities, and furniture that had success engraved upon it? Have you ever imagined designing a home as a work of art? Reimagine.

### APPLICATIONS

Façade  
Cladding  
Exterior Ceiling

Wet Area Lining  
Flooring  
High Impact Wall Partitions

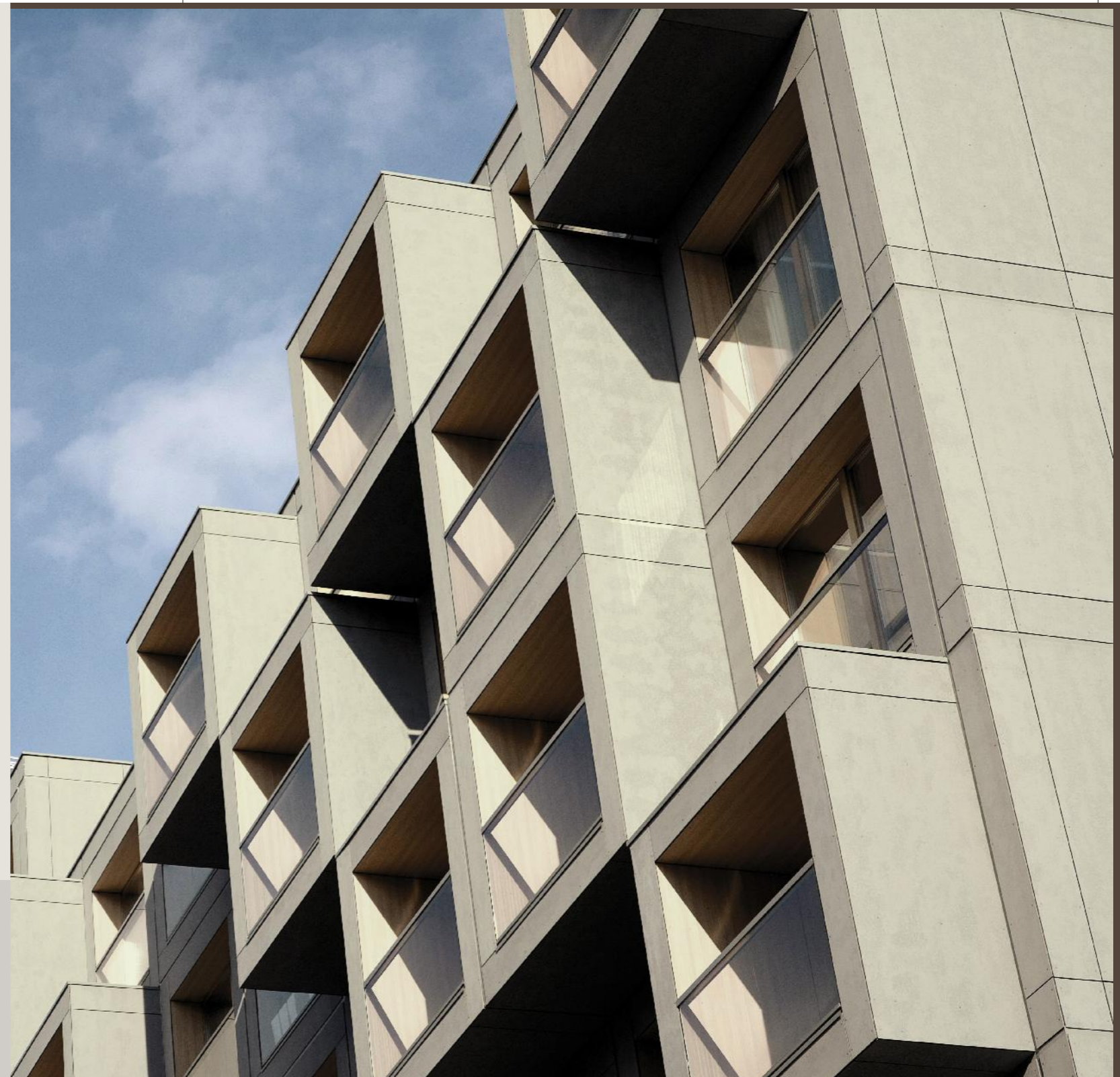


# LESS = MORE\*

At Everest, everything we do stems from an eco-friendly, efficient and forward-thinking philosophy. Our compressed cement-based building products challenge the age-old use of brick and mortar. Not only are these materials much lighter and a lot more durable, they are pre-finished and easier to install, and thus reduce the construction period considerably. Their compressed form also ensures a higher strength to weight ratio, and more space saving.

## Benefits

- Can be used in raw form
- Space saving
- Time saving in construction
- Less weight and more durable
- Easy to install
- Eco-friendly







Unparalleled Style,  
unmatched strength





## Best in style and in strength.

Elevated impact resistance and dimensional stability make these apt for a spectrum of hospitality-based, commercial, industrial and residential projects. Besides being the strongest boards, they enable an effortless blend with a wide variety of surface finishes like laminates ceramic, vitreous tiles, paints and renders.





## Designed to last long, and stay strong.

Built to sustain prolonged exposure to sun, rain and UV rays, Everest Heavy Duty Boards are aesthetically minimal. Despite being thinner, these boards help create internal and external load-bearing walls and floors that are stronger and long-lasting.

<b>PRODUCT PROFILE</b>	<b>THICKNESS</b>
	6 mm, 9 mm and 12 mm
	<b>LENGTH x WIDTH</b>
	2440 mm x 1220 mm



## SUPERLATIVE FIRE RESISTANCE PROPERTIES

Everest Heavy Duty Wall Boards are made of non-combustible material and qualify for:

### EARLY FIRE HAZARD INDICES

PROPERTY	RESULT
IGNITION INDEX	0*
IGNITABILITY	0*
HEAT EVOLVED INDEX	0*
FLAME SPREAD INDEX	0*
SMOKE DEVELOPED INDEX	0*
REACTION TO FIRE AS EN 13501: PART-I	A2-s1-d0
SURFACE SPREAD OF FLAME AS PER ASTM E84	Class A

\*Zero is the best result

### RESISTANCE TO FIRE AS PER BS-476

PROPERTY	RESULT
COMBUSTIBILITY	Non combustible as per BS 476, Part IV
IGNITABILITY	Class "P"-not easily ignited, as per BS 476, Part V
FIRE PROPAGATION INDEX	Passes as per BS 476, Part VI
SURFACE SPREAD OF FLAME	Class - 1, as per BS 476, Part VII



**Weather Resistant**



**Termite Resistant**



**Fire Resistant**



**Less Carpentry**

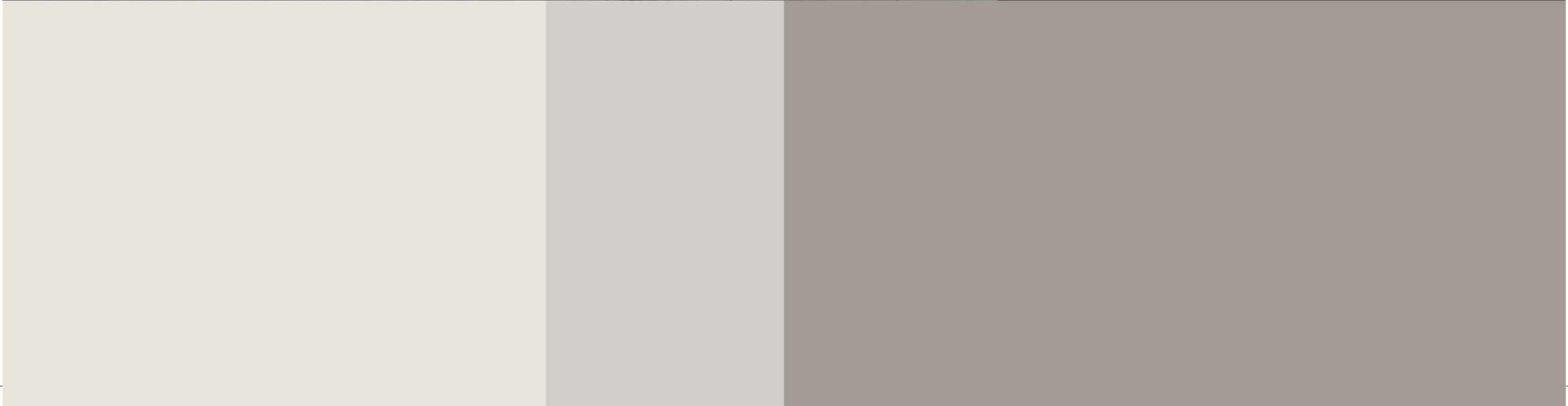


**Green Product**





Let every wall  
be worthy  
of recognition.







## Strong, moisture resistant boards for all kinds of floors.

An Everest Compressed Floor Board is a high-density, fibre cement structural flooring substrate for various finishes over timber or lightweight steel floor joists. It is an excellent alternative for false floors, internal wet areas and external building locations. It is a strong, durable, moisture resistant substitute to particleboard, engineered timber and plywood substrates; and a lightweight alternative to concrete.

Everest HD Floor Boards can be covered with vinyl, tiles, marble, slate or granite. With superior load bearing properties the HD Floor Boards are widely used as a substrate for mezzanine floors and lofts as well. They are ideal for hospitality, commercial, healthcare and residential properties.

### PRODUCT PROFILE

#### THICKNESS

15 mm

#### LENGTH x WIDTH

2400 mm x 1200 mm

2440 mm x 1220 mm

3000 mm x 1200 mm

3000 mm x 1220 mm

#### THICKNESS

18 mm

#### LENGTH x WIDTH

2400 mm x 1200 mm

2440 mm x 1220 mm





## Well fit in a comfort zone.

High-impact and water-resistant wall boards, appropriate in wet areas in the form of tile backers, linings and walls.

Everest HD-lining wall is a high performance fibre cement board that creates an even, flat surface which can be painted, wallpapered or tiled to achieve a variety of looks. Specially designed for kitchens, bathrooms, spas and pool changing rooms, Everest Wall Boards are innovative, high performing, durable and moisture resistant products that allow internal wall lining to meet the durability requirements.

<b>PRODUCT PROFILE</b>	<b>THICKNESS</b>
	6 mm and 9 mm
<b>LENGTH x WIDTH</b>	2400 mm x 1200 mm
	2440 mm x 1220 mm
	3000 mm x 1200 mm
	3000 mm x 1220 mm



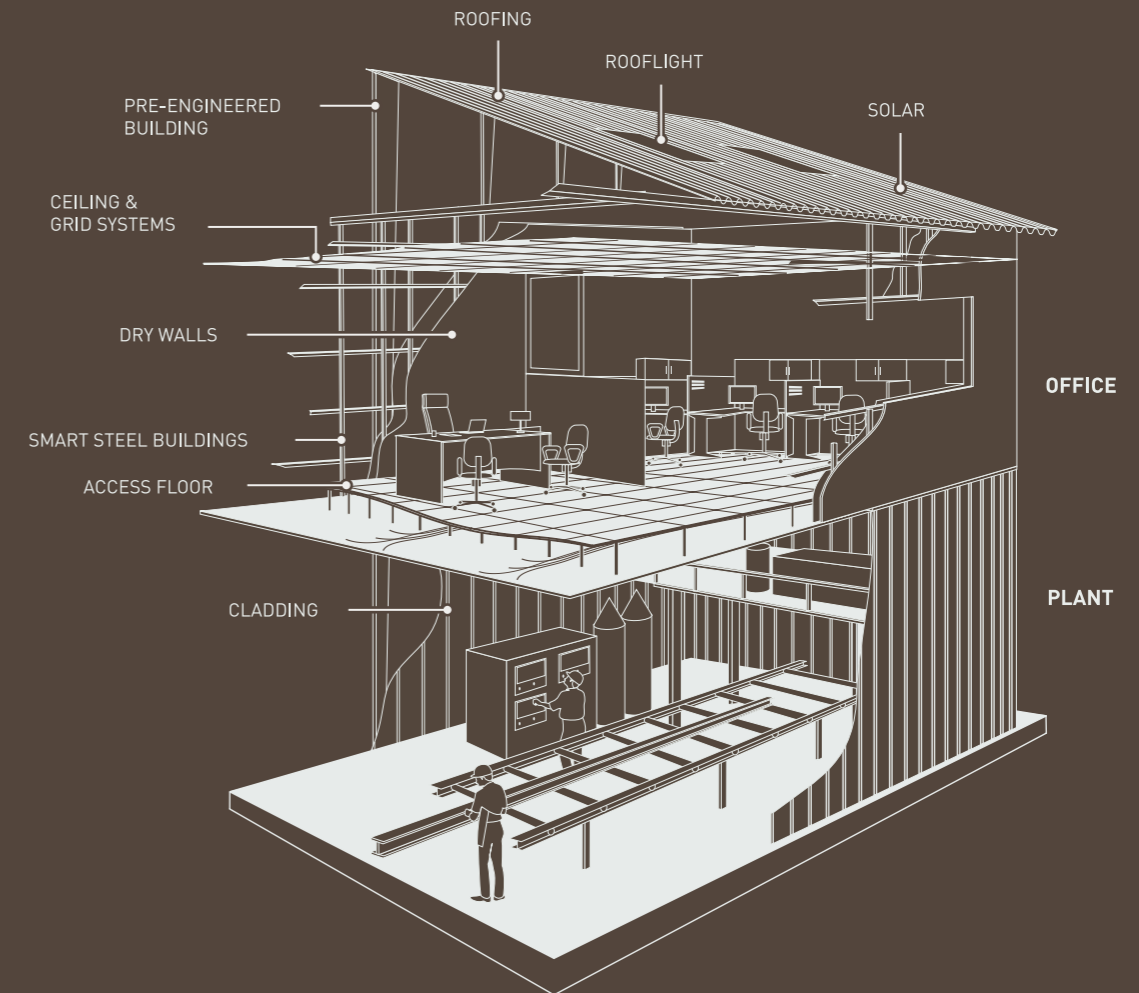
## TECHNICAL AND PHYSICAL SPECIFICATIONS OF HEAVY DUTY BOARDS

DESCRIPTION	UNIT	STANDARD	EVEREST HD BOARD
CATEGORY*	—	—	Category A (as per EN12467 & ASTM C 1185)
CLASS*	—	—	Class III (EN12467)/ Class 4 (ASTM C 1185)
APPARENT DENSITY	kg/m <sup>3</sup>	ASTM C 1185/EN 12467	→1450
MINIMUM MODULUS OF RUPTURE (MOR): (at EMC)	Mpa	ASTM C 1185/EN 12467	→ 18 MPA
MINIMUM MODULUS OF RUPTURE (MOR): (in Wet Condition)	Mpa	ASTM C 1185/EN 12467	→ 14 MPA
ADHESION LAMINA TEST	Mpa	ASTM D 1037	0.8
DIRECT SCREW WITHDRAWAL STRENGTH	N	ASTM D 1037	1750
THERMAL CONDUCTIVITY	W/mk	ASTM C 518	0.22
LINEAR COEFFICIENT OF THERMAL EXPANSION	mm/mm/°C	ASTM C 696	9.4 x 10 <sup>-6</sup>
SOUND ABSORPTION	dB	DIN 52210	34 for 8 mm
pH VALUE	—	—	8-9
MOISTURE CONTENT - at EMC	%	—	6-8
FREEZE THAW RESISTANCE (100 Cycles)	—	ASTM C 1185/EN 12467	Pass
WARM WATER RESISTANCE (56 Days)	—	ASTM C 1185/EN 12467	Pass
SOAK - DRY RESISTANCE (50 Cycles)	—	ASTM C 1185/EN 12467	Pass
HEAT - RAIN RESISTANCE (50 Cycles)	—	EN 12467	Pass
MOISTURE CONTENT	%	ASTM C 1185	8-10
WATER ABSORPTION - RAW PANEL	%	EN 12467	←30

\*as per EN 12467:2012+A2:2018 Category A class 3

\*as per ASTM C 1185 Category A class 4

Everest is a complete building solutions provider. Established in 1934, Everest today is a comprehensive building solutions provider, with a constant endeavour to innovate new age building solutions. The company offers a wide range of roofing, ceiling, wall, flooring and cladding products. The company has consistently introduced new age building products like Pre-engineered steel buildings for the industrial, commercial sector and solar rooftop solutions. Everest has been a pioneer of new-age fibre cement boards and panels, which enable strong, light, rapid and durable construction of residential, commercial and industrial infrastructure. Made using environment-friendly materials, these products are used in a wide range of applications such as cladding, ceilings, walls, facades, wall partitions, interior & exterior wall lining, pre-fab structures, drywalls and mezzanine floors. Everest Boards and Panels are manufactured using Hatchek process enabled with HPSC (High Pressure Steam Curing) technology which makes them moisture, fire and termite resistant. These new age panels have significant competitive edge to other wood based alternatives.



OUR RANGE OF HEAVY DUTY BOARDS ARE  
CERTIFIED BY ISO, CE, GREENPRO AND GRIHA

Some of the pictures used here are rendering images. For more actual project pictures, contact us."



**everest**

EVEREST INDUSTRIES  
LIMITED

**everestind.com**

Level 3, Tower 14, Solitaire Corporate Park,  
Chakala, Andheri (E), Mumbai - 400093, India.

Email [ib@everestind.com](mailto:ib@everestind.com)