

**everest**

COLOUR COMPRESSED  
BOARDS







**Strength. Durability.  
Longevity.**

**It's what you'll find  
beyond the facade.**

Eco-friendly materials for a safer environment.

Better dimensional stability.

Optimised performance in all weather conditions.

Elevated impact resistance in high mobility areas.

High durability for stronger, longer lasting structures.



Complement the finer details  
of any space.  
With an unmatched aesthetic.



Crafted to perfection, and through coloured.

A warm, striking aesthetic.

Unparalleled durability.

Ideal for diverse design needs.

**SIZES** (in mm)

L X W	THICKNESS
2400 X 1200	
2440 X 1220	
3000 X 1200	8,10,12
3000 X 1220	





## Build a home with room for inspiration.

These versatile boards come with an efficient material palette; something that goes a long way in complementing its inspirational design language - which can bring alive the vision and charm of even the most nuanced sensibility.







#### APPLICATIONS

External facade  
Internal cladding

#### SECTORS

Hospitality and conference facilities  
Retail and shopping malls  
Commercial building  
Education  
Healthcare and leisure  
Restaurants and hotels  
Public utilities



# Key properties

## GENERAL PROPERTIES

PROPERTY	TESTING STANDARDS	CCB
Dimensional Tolerance - Length, Width and Thickness	EN12467	Level 1
Dimensional Tolerance - Straightness of Edges	EN12467	Level 2
Dimensional Tolerance - Squareness of Edges	EN12467	Level 1



**IMPACT  
RESISTANT**



**MOISTURE  
RESISTANT**



**TERMITE  
RESISTANT**



**FIRE  
RESISTANT**



**WEATHER  
RESISTANT**



**COMPRESSED  
BOARD**





## It's what's on the outside that counts.

Customised panels make for endless design possibilities. You'll discover a wide range of finishes and colours with surface treatment (Hydrophobation). These durable, pigmented boards are everything you need to lend elegance to the exterior of any high profile project.

The various CCB specialities rest on the through coloured platform. Panels with perforations, engravings or other surface treatments are provided with an outstanding finish. They may be used individually or in combination with other CCB panels in the same shade, different shade or even with other materials.



Just what signature  
interiors need:  
some trademark style.

Everest CCB is a high performance fibre cement board that creates an even, flat surface which can achieve a variety of looks. They are innovative, high performing, and moisture resistant products that allow internal wall lining to meet durability requirements.

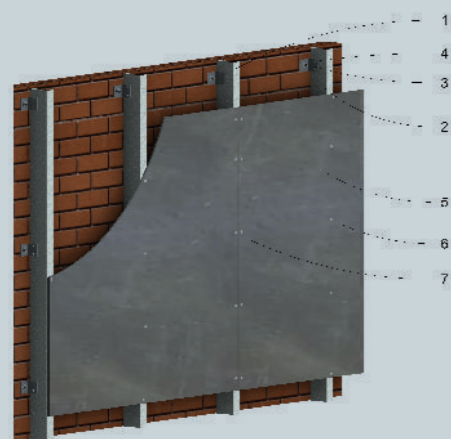




## Technical specs

PROPERTY	UNITS	TESTING STANDARDS	EVEREST BOARD
Apparent Density	kg/m <sup>3</sup>	EN 12467	→ 1450
Minimum Modulus of Rupture (MOR): (at EMC)	Mpa	ASTM C 1185	→ 18 MPA
Minimum Modulus of Rupture (MOR): (in Wet Condition)	Mpa	ASTM C 1185	→ 14 MPA
Adhesion Lamina Test	Mpa	ASTM D 1037	0.8
Direct Screw Withdrawal Strength	N	ASTM D 1037	1750
Thermal Conductivity	W/mk	ASTM C 518	0.22
Linear Coefficient of Thermal Expansion	mm/ mm/0 C	ASTM C 696	9.4 x 10 <sup>[-6]</sup>
pH Value			8-9
Moisture Content (at EMC)	%		6-8
Freeze - Thaw Resistance (100 Cycles)		EN 12467	Pass
Warm Water Resistance		EN 12467	Pass
Soak - Dry Resistance (50 Cycles)		EN 12467	Pass
Heat - Rain Resistance (50 Cycles)		EN 12467	Pass
Water Absorption - Raw Panel	%	EN 12467	←30

\* EN12467:2012+A2:2018



CCB on LGSF

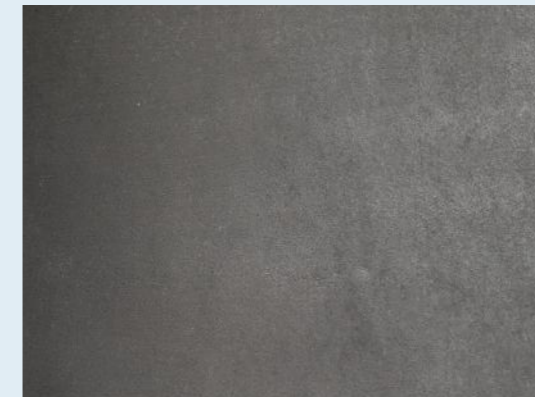


Rivet Blowup

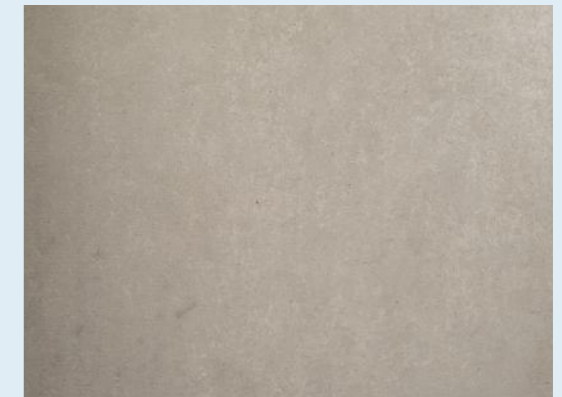
1. LGSF Stud
2. LGSF Noggin
3. Cleat
4. Metal screw
5. Color compressed board
6. Rivet
7. 3-4 mm groove

## Shades

The Everest CCB range is a departure from the ordinary in every aspect. Including its range of colours. The panels come in a variety of shades as part of a diverse and vivid palette.



MIDNIGHT GREY



ASH GREY



TERRACOTTA RED



LIMESTONE YELLOW



## A 'forward-thinking' belief helps us put our best foot forward.

At Everest, everything we do stems from an eco-friendly, efficient and forward-thinking philosophy. Our compressed cement-based building products challenge the age-old use of brick and mortar. Not only are these materials much lighter and a lot more durable, they are pre-finished and easier to install, and thus reduce the construction period considerably.

### EXPERT SUPPORT

The Everest project team provides expert support services throughout all stages of any construction project, including:

- Technical advice
- Supply of data sheets and certification
- Product selection and application consultation
- Site visits
- Installation advice

\*some of the images used in the brochure are for reference purpose only and not actual project image





**everest**

EVEREST INDUSTRIES  
LIMITED

**everestind.com**

Level 3, Tower 14, Solitaire Corporate Park,  
Chakala, Andheri (E), Mumbai - 400093, India.

Email [ib@everestind.com](mailto:ib@everestind.com)