

everest

ArteSeries | cement
wood plank



Beauty of wood
with the durability of cement.

Fibre cement based pre-finished premium planks that emulate the look of timeless wood and are perfect for exterior and interior wall cladding.



MOISTURE
RESISTANT



WEATHER
RESISTANT



FIRE
RESISTANT

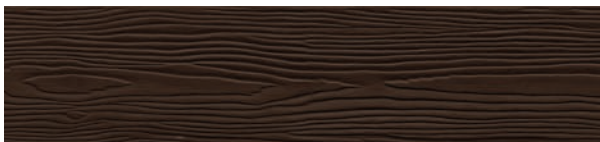


IMPACT
RESISTANT



TERMITE
RESISTANT

ArteSeries planks are available in six different shades of natural wood. The white primered plank can be customized to suit any color and individual aesthetic as per your preference.



Coco Brown



Golden Sand



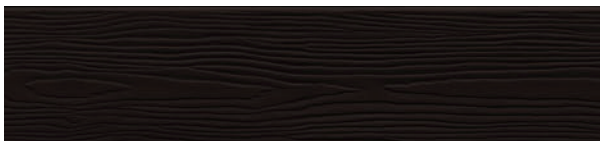
Ebony



White Pine



Rosewood



Dark Walnut

Technical Specifications

Description	ArteSeries Planks
Specification Standard	IS 14862:2000
Type	A
Category	3
Apparent Density	>1200 kg/m ³
Modulus of Rupture (in wet condition)	>8 MPa
Thermal Conductivity at 50°C (Mean Temperature)	0.2 W/mk
Moisture Resistance Properties	Moisture Resistant



Applications

External Cladding	Internal Wall Lining
Concealed Ceiling	Soffit Lining
Gates and Fences	Duct Encasement

Size

3000mm x 150mm

3000mm x 225mm

Thickness:

8mm



Fire Resistance Properties

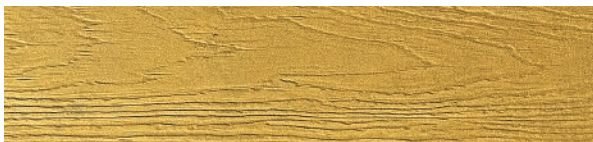
Reaction to Fire	A2-s1-d0* (EN 13501: Part-1)
Combustibility	Non-Combustible (BS 476, Part IV)
Fire Propagation Index	Pass (BS 476, Part VI)
Surface Spread of Flame	Class 1 - Doesn't Spread Fire (BS 476, Part VII)

* Non Combustible with negligible smoke and no fire droplets

Textures:



Teak

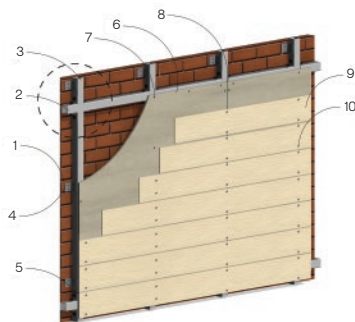


Cedar

Everest ArteSeries Groove Pattern

System Components:

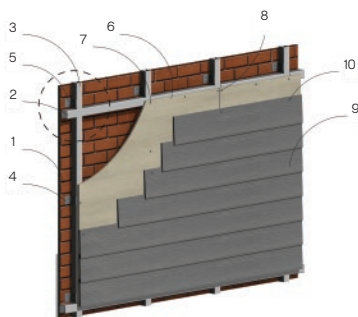
1. Existing Wall
- 2/3. Framing System
4. Cleat
5. Nut and Bolt
6. 6/9mm Thickness Everest SuperHD
7. 25mm Everest Screw
8. Everest Jointing Compund
9. ArteSeries Cement Wood Plank
10. 35mm Everest Screw



Everest ArteSeries Overlap Pattern

System Components:

1. Existing Wall
- 2/3. Framing System
4. Cleat
5. Nut and Bolt
6. 6/9mm Thickness Everest SuperHD
7. 25mm Everest Screw
8. Everest Jointing Compund
9. ArteSeries Cement Wood Plank
10. 35mm Everest Screw



Everest Cement Wood Plank v/s Wood and HPL

Properties	Everest Cement Wood Plank	Wood	HPL
Low Maintenance	✓	X	X
Termite Resistant	✓	X	X
Moisture Resistant	✓	X	✓
Sustainable	✓	X	X
Eco Friendly	✓	X	X
Dimensionally Stable	✓	X	X

System Components



Everest ArteSeries
Cement Wood Plank



6/9mm Thickness
Everest SuperHD



25/35mm
Everest Fibre Cement
Board Screws



51mm Stud



53mm Track



50mm Wide
Furring Channel
0.50mm Thick GI



Everest Cement Board
Jointing Compound



40mm Wide
Fibre Mesh Tape

everest

Everest Industries Ltd

Level 3, Tower 14, Solitaire Corporate Park, Chakala,
Andheri (E), Mumbai - 400 093, India.

Call: 1800-4191-991 | Mail: info@everestind.com

www.everestind.com

Scan the QR code
for brochure and
installation guide

